

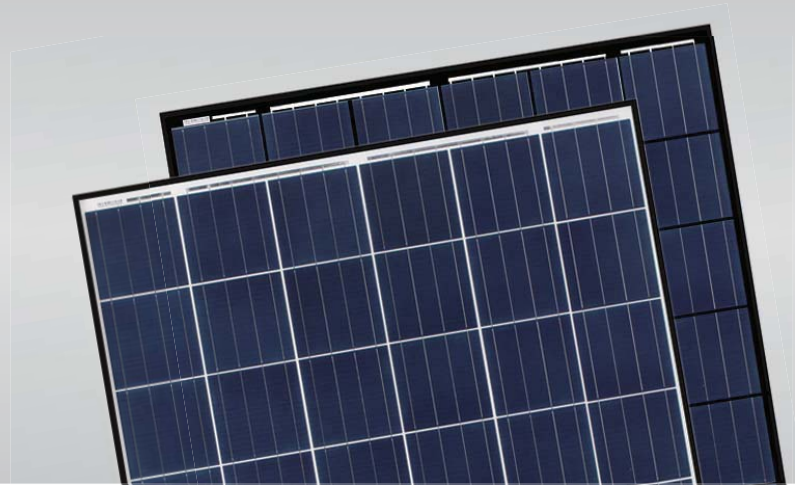
Jinko 60

255-275 Watt

POLYCRYSTALLINE MODULE

*1500V Available

Positive power tolerance of 0/+3%



KEY FEATURES



High Voltage

1000V standard; 1500V option lowers BOS costs and yields better LCOE



Innovative Solar Cells

Four busbar cell technology improves module efficiency



PID Resistance

Resistance against PID for improved durability



Low-Light Performance

New glass technology improves light absorption and retention



Strength and Durability

Certified for high snow (5400Pa) and wind (2400Pa) loads



Weather Resistance

Certified for salt mist and ammonia resistance

- ISO9001:2008 Quality Standards
- ISO14001:2004 Environmental Standards
- OHSAS18001 Occupational Health & Safety Standards

Nomenclature:

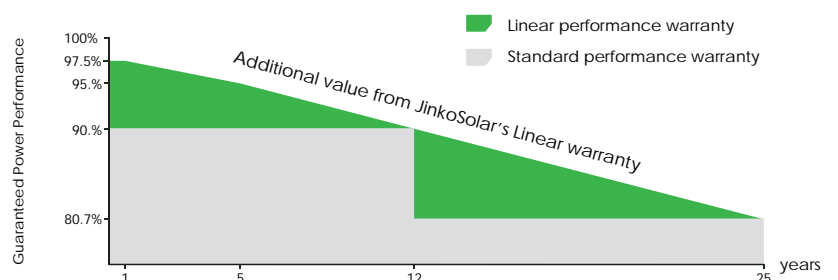
JKM270P - 60 -

Code	Certification
null	1000V
V	1500V

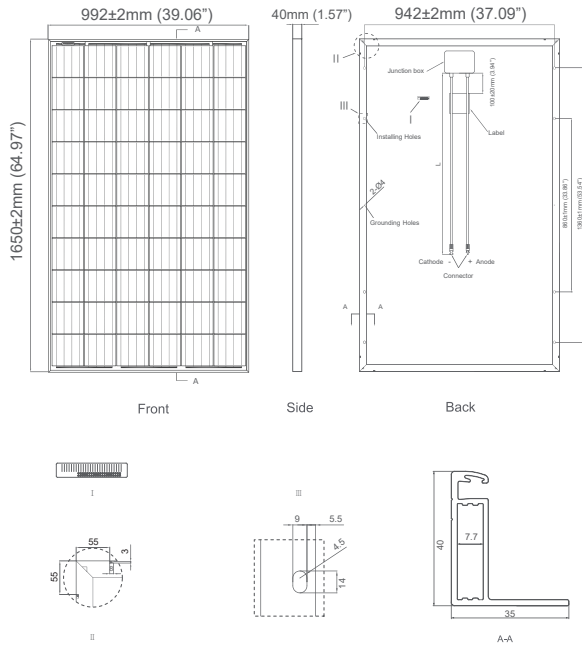


LINEAR PERFORMANCE WARRANTY

10 Year Product Warranty • 25 Year Linear Power Warranty



Engineering Drawings

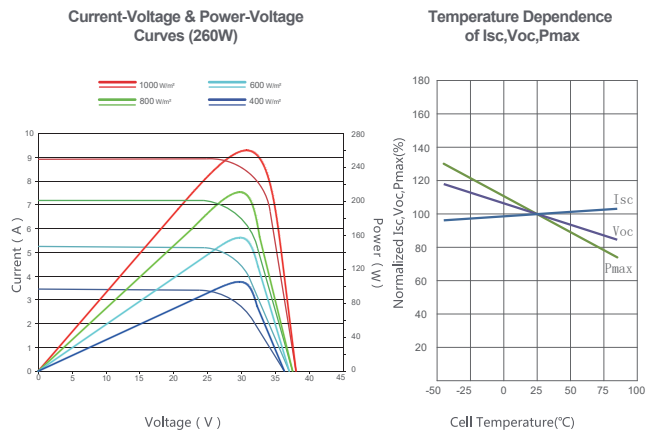


Packaging Configuration

(Two boxes=One pallet)

25pcs/box, 50pcs/pallet, 700pcs/40'HQ Container

Electrical Performance & Temperature Dependence



Mechanical Characteristics

Cell Type	Polycrystalline 156×156mm (6 inch)
No. of cells	60 (6×10)
Dimensions	1650×992×40mm (64.97×39.06×1.57 inch)
Weight	19.0 kg (41.9 lbs)
Front Glass	3.2mm, High Transmission, Low Iron, AR Coating Tempered Glass
Frame	Anodized Aluminium Alloy
Junction Box	IP67 Rated
Output Cables	12 AWG, Length:900mm (35.43 inch)
Fire Type	Type 1

SPECIFICATIONS

Module Type	JKM255P-V		JKM260P-V		JKM265P-V		JKM270P-V		JKM275P-V	
	STC	NOCT	STC	NOCT	STC	NOCT	STC	NOCT	STC	NOCT
Maximum Power (Pmax)	255Wp	189 Wp	260Wp	193Wp	265Wp	197Wp	270Wp	200Wp	275Wp	204Wp
Maximum Power Voltage (Vmp)	30.8V	28.5V	31.1V	28.7V	31.4V	29.0V	31.7V	29.4V	32.0V	29.8V
Maximum Power Current (Imp)	8.28A	6.63A	8.37A	6.71A	8.44A	6.78A	8.52A	6.80A	8.61A	6.85A
Open-circuit Voltage (Voc)	38.0V	35.2V	38.1V	35.2V	38.6V	35.3V	38.8V	35.4V	39.1V	35.4V
Short-circuit Current (Isc)	8.92A	7.26A	8.98A	7.31A	9.03A	7.36A	9.09A	7.38A	9.15A	7.44A
Module Efficiency STC (%)	15.58%		15.89%		16.19%		16.50%		16.80%	
Operating Temperature(°C)	-40°C~+85°C									
Maximum system voltage	1500VDC (UL)									
Maximum series fuse rating	15A									
Power tolerance	0~+3%									
Temperature coefficients of Pmax	-0.41%/°C									
Temperature coefficients of Voc	-0.31%/°C									
Temperature coefficients of Isc	0.06%/°C									
Nominal operating cell temperature (NOCT)	45±2°C									

STC: ☀ Irradiance 1000W/m² 📏 Cell Temperature 25°C ☁ AM=1.5

NOCT: ☀ Irradiance 800W/m² 📏 Ambient Temperature 20°C ☁ AM=1.5 🌀 Wind Speed 1m/s

* Power measurement tolerance: ± 3%

CAUTION: READ SAFETY AND INSTALLATION INSTRUCTIONS BEFORE USING THE PRODUCT.

© Jinko Solar Co., Ltd. All rights reserved specifications included in this datasheet are subject to change without notice.
US-MKT-275P-1500V_v1.0_rev2016